



ROTH tilting levers extension

REF 1400574 for ROTH Mobile

Hand grips with vacuum safety indicator



It is essential that you read and understand this information before using the device!

Keep these instructions for use and pass them on to other users!



Before using the grip please read the instructions for the adjustable grip carefully and make sure you understand them, as they contain further hints on safety, installation and maintenance.

Intended use: Extension for locking or releasing the tilting vacuum levers for ROTH mobile handles. For persons with less manual force.

Attaching: (see pictures)

Push the tilting levers extension (Fig. 1) over the tilting lever of the suction cup (Fig. 2). Press the handle firmly against the (tile) wall and swivel the tilting lever with the tilting lever extension (Figs. 3 + 4), while **pressing the tilting lever extension downwards at the same time**. The safety rocker should be completely retracted after the toggle lever has been turned (Circle Fig. 4). If this is not the case (Circle Fig. 5) and the rocker bar still protrudes with the finger after pressing in, loosen the rocker bar once again and press the rocker bar firmly downwards again at the same time when swiveling in (see arrows Fig. 3). Then turn the opposite tilting lever as well.

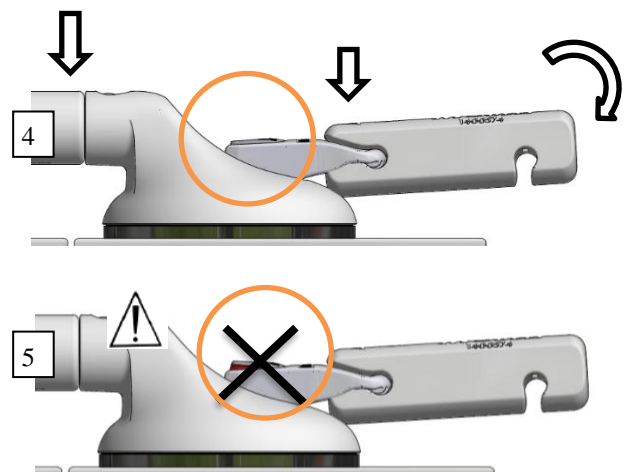
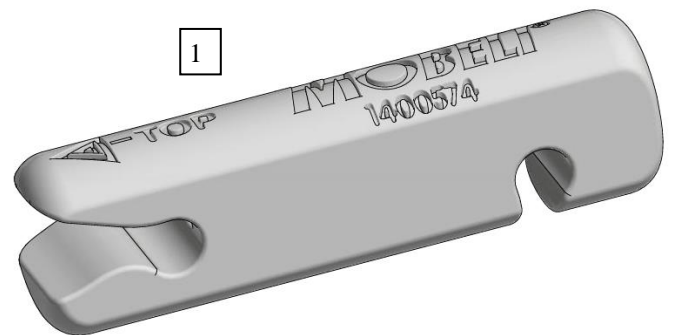
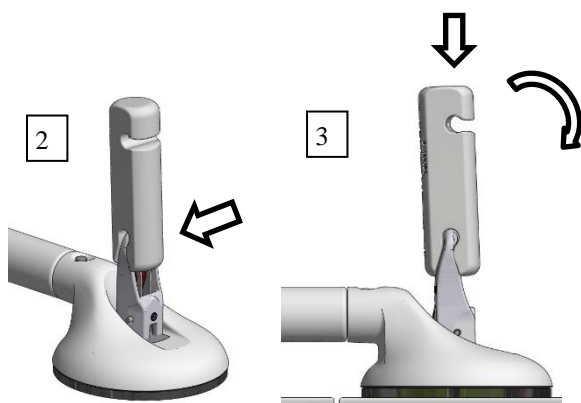
Do not use the mobile handle until all the safety rockers of the suction parts have been fully swivelled in. Otherwise do not use the handle. Attention: Risk of accident!



Attention! If, after closing the tilting levers, the tilting lever extensions (if you have several) remain on the handle, there is a risk that someone will unintentionally release them. In this case, you must ensure that the tilting lever is not unintentionally released. A tilting lever lock is also available as an accessory.



Possible use in a corner, see reverse.



Use in the corner:

Push the tilting lever extension over the tilting lever (Fig. 6+7).

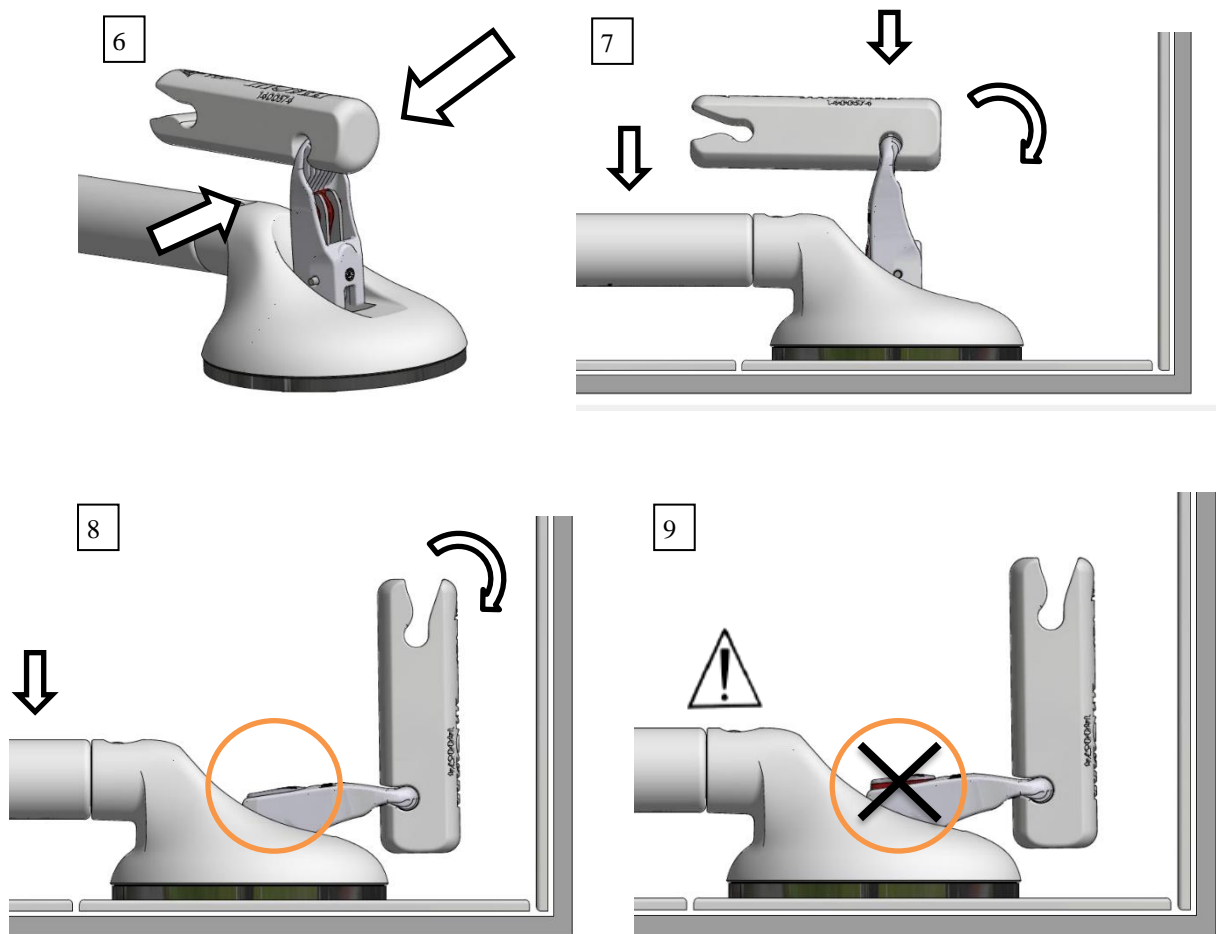
Press the handle firmly against the (tile) wall and swivel the tilting lever and the tilting lever with the tilting lever extension (Figs. 7+8), while at the same time pressing the tilting lever extension downwards.

The safety rocker should be completely retracted after the toggle lever has been turned (Circle Fig. 8). If this is not the case (circle Fig. 9) and the rocker is still sticking out even after pressing in with your finger, loosen the tilting lever once again and press the tilting lever firmly downwards at the same time as you swivel it in (see arrows Fig. 7).

Then turn the opposite tilting lever as well.



Do not use the mobile handle until all the safety rockers of the suction parts have been fully swivelled in. Otherwise do not use the handle. Attention: Risk of accident!



Maintenance:

Clean the tilting lever extension with standard household cleaning agents like soap and water solution.

Disposal:

The product packaging should be recycled. The metal parts can be recycled as scrap metal. Disposal must be carried out according to the respective national statutory regulations. Please ask your local or communal authority about local disposal facilities.